

The logo for LIGHTRONICS features a stylized graphic of a bridge or structure on the left, followed by the word "LIGHTRONICS" in a bold, white, sans-serif font. A small red triangle is positioned below the letter 'I'.

LIGHTRONICS

# HOGRO PLUS

STYLISH, DURABLE AND SUSTAINABLE

# Create a residential complex with a clear signature and visual identity

Lighting is one of the aspects that determines the character and appearance of a residential complex. Besides the fact that residents and visitors find it important that (common) areas are well-lit, lighting also contributes to the aesthetic quality of a building. With the Hogro Plus, DOTT, GEO and RINK luminaires, you can create a residential complex with a clear signature and visual identity. These linear wall and ceiling luminaires combine striking design with energy-efficient LED technology.

The RINK, GEO and DOTT luminaire family is suitable for a wide range of applications. Our sophisticated technology ensures uniform light distribution in all cases. Moreover, these luminaires offer plenty of opportunities for creative variation.



## YOU ARE GUARANTEED:

- › Extensive lighting features
- › A lumen package that is tailored to the application
- › Modern lighting technology that can be easily upgraded in the future
- › Long service life
- › Easy installation
- › A smaller CO<sub>2</sub> footprint
- › A luminaire with guaranteed future supply availability - to preserve a uniform appearance
- › Lower operating costs



## DOTT M

Available as a surface-mount or recessed luminaire: the DOTT M can be installed in a variety of ways and is suitable for entrances, access galleries, stairwells, exterior façades and lift lobbies.



## RINK

With its oval shape, the RINK designer luminaire offers decorative lighting for front doors, access galleries and balconies, and is also suitable for corridors and back alleys.



## DOTT / DOTT H

The DOTT is a versatile luminaire that is ideal for installation next to front doors, in access galleries, and in porches and stairwells. The DOTT H features a half-height protective cover that can be used to display a logo or house number. This makes it an ideal luminaire for creating an individual accent next to a front door, in access galleries and on exterior façades.



## GEO

The GEO can be installed in entrances and next to front doors, in stairwells and in access galleries. This triangular luminaire is available in three variants and can be mounted with the point up or down.



## DOTT XL

Entrances, exterior façades, lift lobbies, stairwells: the DOTT XL is suitable for a variety of applications in large spaces or areas where more light is required.



# RINK

With its refined, compact and modern design, the RINK can be used in any setting. The composition of the lumen package makes it possible to tailor the amount of light to the specific application. The result is a high degree of comfort and safety - because there is always the right amount of light - combined with maximum savings.

- Design:** robust and stylish oval surface-mount luminaire
- Diffuser:** UV-stabilised polycarbonate, opalescent
- Colour:** DB703 or RAL 9010
- Housing:** aluminium, two coats of epoxy
- Light source:** LED
- Lumen output range:** 280- 560 lm
- Colour temperature:** neutral white (4000K) or warm white (3000K)

## Areas of application



PORCHES



STORAGE ROOMS



CORRIDORS



FRONT DOORS



EXTERNAL ACCESS GALLERIES



BACK ALLEYS



## Features

≥2 x IK 10

IP 65



OPTIONAL





# DOTT

The convex diffuser gives the DOTT luminaire family its own unique identity. The DOTT is the smallest member of the family and the undisputed all-rounder for numerous applications.

- Design:** robust and stylish round surface-mount luminaire
- Diffuser:** UV-stabilised polycarbonate, opalescent or frosted
- Colour:** DB703 or RAL 9010
- Housing:** aluminium, two coats of epoxy
- Light source:** LED
- Lumen output range:** 650 - 1720 lm
- Colour temperature:** neutral white (4000K) or warm white (3000K)



## Areas of application



ENTRANCE



EXTERIOR  
FAÇADES



LIFT LOBBIES



STAIRWELL



CORRIDORS

## Features

≥5 x IK 10

IP 65

ENEC



## OPTIONAL





# DOTT H

The DOTT H can be used to create an additional accent for front doors and on galleries and façades. The luminaire features a half-height cover that can be personalised with a house number or logo.

**Design:** robust and stylish surface-mount luminaire with a cover

**Diffuser:** UV-stabilised polycarbonate, opalescent or frosted

**Colour:** DB703 or RAL 9010

**Housing:** aluminium, two coats of epoxy

**Light source:** LED

**Lumen output range:** 650 - 1050 lm

**Colour temperature:** neutral white (4000K) or warm white (3000K)

## Areas of application



FRONT DOORS



STAIRWELL



ENTRANCE



EXTERNAL  
ACCESS  
GALLERIES



EXTERIOR  
FAÇADE



## Features

≥5 x IK 10

IP 65

ENEC



## OPTIONAL





# DOTT M

In terms of size, the DOTT M is the middle member of the DOTT luminaire family. This model is highly versatile: the DOTT M is suitable for both surface mounting and recessed mounting (optional).

**Design:** robust and stylish round surface-mount or recessed luminaire

**Diffuser:** UV-stabilised polycarbonate, opalescent or frosted

**Colour:** DB703 or RAL 9010

**Housing:** aluminium, two coats of epoxy

**Light source:** LED

**Lumen output range:** 1250 - 3050 lm

**Colour temperature:** neutral white (4000K) or warm white (3000K)

## Areas of application



ENTRANCE



EXTERIOR  
FAÇADES



LIFT LOBBIES



STAIRWELL



CORRIDORS

## Features

≥5 x IK 10

IP 65

ENEC



OPTIONAL





# DOTT XL

The DOTT XL is the largest model in the DOTT luminaire line. This luminaire is suitable for large entrances, corridors and stairwells thanks to the sizeable lumen package.

- Design:** robust and stylish round surface-mount luminaire
- Diffuser:** UV-stabilised polycarbonate, opalescent or frosted
- Colour:** DB703 or RAL 9010
- Housing:** aluminium, two coats of epoxy
- Light source:** LED
- Lumen output range:** 1720 - 3400 lm
- Colour temperature:** neutral white (4000K) or warm white (3000K)



## Areas of application



ENTRANCE



EXTERIOR  
FAÇADES



LIFT LOBBIES



STAIRWELL



CORRIDORS

## Features

≥5 x IK 10

IP 65

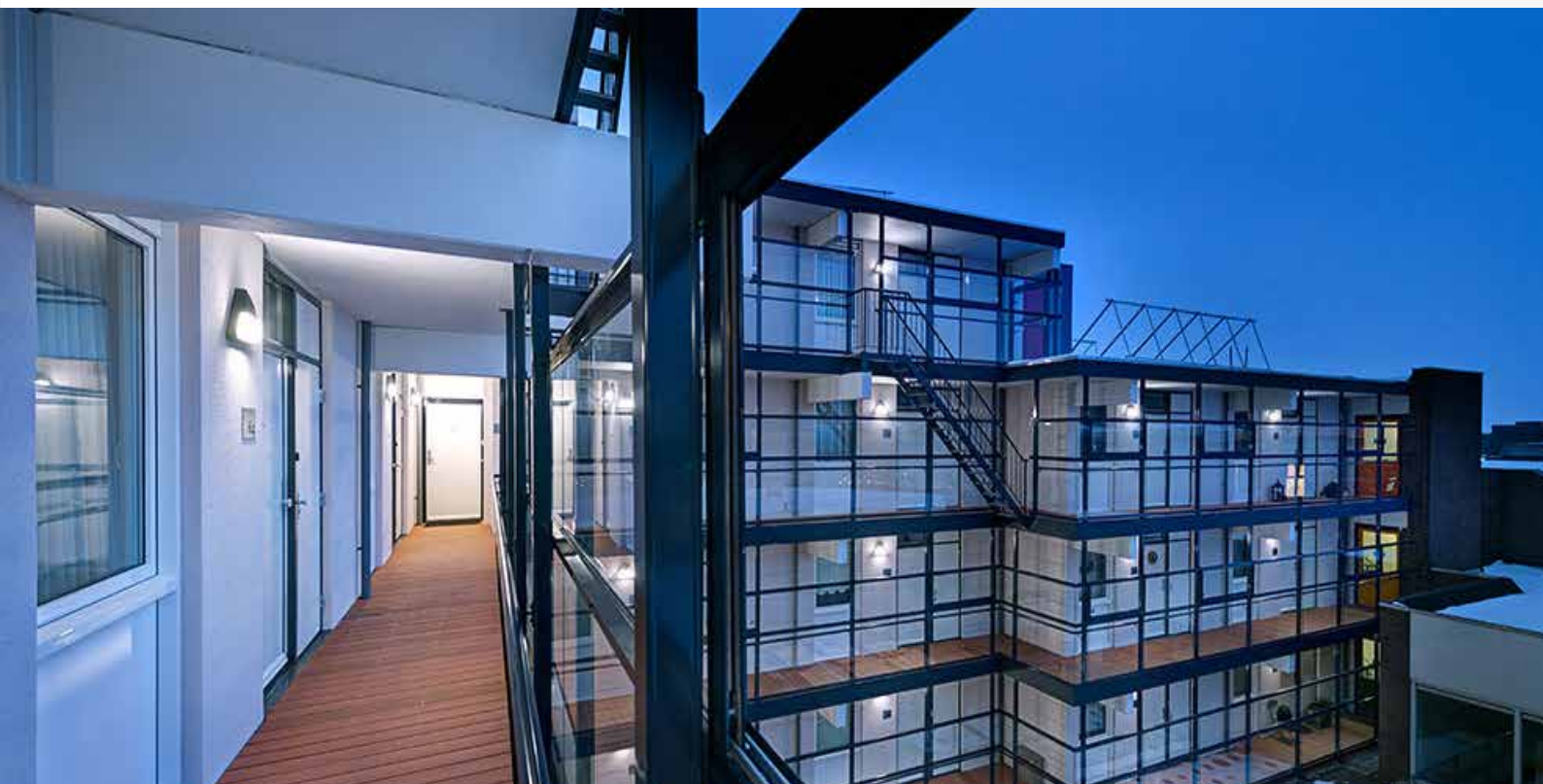
ENEC



## OPTIONAL







# GEO I / II / III

The GEO offers a wide range of lighting possibilities within a single basic luminaire design. The luminaire can be mounted with the point up or down. The different versions offer 360-degree, extensive-spread and narrow-spread distribution

**Design:** robust and stylish triangular wall luminaire

**Diffuser:** UV-stabilised polycarbonate, opalescent or frosted

**Colour:** DB703 or RAL 9010

**Housing:** aluminium, two coats of epoxy

**Light source:** LED

**Lumen output range:** 440 - 1250 lm

**Colour temperature:** neutral white (4000K) or warm white (3000K)



## Areas of application



ENTRANCE



STAIRWELL



EXTERNAL  
ACCESS  
GALLERIES



FRONT DOORS

## Features

≥2 x IK 10

IP 65



OPTIONAL



# Legend: Features

≥5 x IK 10

Extremely vandal-proof (100 Joules)

IP 65

Dust-tight and protected against water jets

ENEC

Enec certified

≥2 x IK 10

Extremely vandal-proof (40 Joules)



Standard Easy Light version



Police-approved: 'Politiekeurmerk'



Dekra Led Performance certified



Can be mounted on normally to easily flammable



Vandal-proof according to SKG quality label



CE mark

## OPTIONAL



Comfort Light version



Emergency lighting version



Electrical protection class II



Twilight switch







# Optimal Total Cost of Ownership

---

Various parameters are important when assessing the Total Cost of Ownership (TCO) of a luminaire. The TCO is the total cost of owning and using a product during its lifespan and usage cycle. Obviously, energy consumption is one of the most important aspects, however issues such as ease of purchase, maintenance and the service life are also important.

## **Energy-efficient luminaire**

Lightronics develops high-quality luminaires. You benefit from a complete and energy-efficient LED luminaire. Options such as motion detection, twilight switches and dimming help achieve further savings.

## **Long service life**

When you opt for the DOTT, GEO and RINK, you are guaranteed stylish luminaires with an extremely long service life, mainly due to the quality of the components. Furthermore, the minimum standard life (operating hours) that Lightronics specifies for the LED light source is 100,000 hours (L70/F10 at an ambient temperature of 25 °C). Other aspects also contribute to optimal efficiency and a favourable TCO. For example, the RINK has a very low system power value, which is also beneficial for the CO<sub>2</sub> footprint. As a result, the RINK's TCO is 55% lower than that of comparable luminaires in its class.



Installing smart LED lighting generates substantial energy savings and is the fastest way to reduce costs and carbon emissions. Significant savings can be achieved thanks to smart new technology for managing the light levels of the luminaires. Lightronics Remotion Plus provides light where and when required and reduces overall energy consumption and luminaire maintenance costs.



Several lumen settings are possible with Easy Light. The Easy Light functionality can optionally be upgraded to include integrated emergency lighting. Easy Light is available as an Opplus kit.



Comfort Light includes an internal autonomous motion detector and twilight switch. The automatic dimming function reduces the light intensity of the luminaire in several steps (100 - 80 - 50 - 20% or optionally down to \*0%) and avoids loss of vision due to dark adaptation.

\*A reduction to 0% is the basement setting and the lighting always switches on again when motion is detected (also during the day).





# HOGRO PLUS makes your environment sustainable



## Long service life and recyclable | **Durable**

The housing of the DOTT, GEO and RINK luminaires is made of durable aluminium, sprayed with two coats of epoxy. This finish protects the luminaire for its entire lifetime and can withstand adverse environments, such as coastal areas with their high airborne salinity.



## Easy to upgrade | **Modular**

The Hogro Plus luminaires are built to a modular design and can be easily upgraded. So new technology can be easily added in the future.



## More profit, less carbon dioxide | **Energy-efficient**

With the DOTT, GEO and RINK, the amount of light can be tailored to the specific situation to maximise energy savings.



## Mounted in next to no time | **Simple installation**

Convenient for installers: the DOTT, GEO and RINK are fast and simple to install.



## 5-year warranty | **Worry-free operation**

As standard, Lightronics offers a 5-year warranty on LED luminaires. The expected life of our LED luminaires is 100,000 hours at an environmental temperature of 25 °C (L70/F10).



## Spare parts availability | **Consistency**

Lightronics guarantees the long-term availability of spare parts for luminaires to assure customers of a consistent visual identity far into the future.



# Why choose Lightronics?

Lightronics is your partner for lighting solutions in (semi-)public spaces. You can create pleasantly lit and safe public spaces with our luminaires and at the same time benefit from low operating costs, optimal quality, reliability and sustainability. Lightronics sheds light on the future. Do you share our vision?

## **Quality**

Lightronics has a strong reputation for supplying solid and reliable products. Our strength lies in our added value: we get fully involved in your project and contribute our ideas and expertise.

## **Certification**

In order to guarantee quality, semi-finished and finished products are checked and tested based on an exhaustive checklist, in accordance with ISO9001:2015 and ISO2859. The safety and performance of our products are guaranteed by the DEKRA Led Performance certificate and other certification. The products have been tested to and comply with the Qualicoat ISO12944 standard.

## **CO<sub>2</sub> Performance Ladder**

Our goal is to minimise carbon dioxide (CO<sub>2</sub>) emissions at all stages of the manufacturing process. Our company is certified to level 5 on the CO<sub>2</sub> Performance Ladder.

## **Corporate Social Responsibility**

We are certified to level 4 on the CSR Performance Ladder. This means that we seek an optimal balance between People, Planet and Profit in all aspects of our business operations.





### **A flat management structure**

The lighting solutions supplied by Lightronics are engineered in Waalwijk in the Netherlands. Advanced production techniques, highly experienced employees and sophisticated internal logistics ensure a fast and direct line between you as our customer and our manufacturing and assembly facilities.

### **Code of conduct**

Lightronics ensures that its suppliers comply with the code of conduct of the ILO (International Labour Organisation). This includes compliance with the law, eliminating corruption and child labour and respect for human rights.

### **Social Value**

Lightronics has created suitable jobs for people with poor employment prospects in the normal labour market.

### **Guarantees**

Lightronics offers an extensive five-year warranty on LED luminaires. Based on the current state-of-the-art components, our luminaires have an expected life span of 100,000 hours (L70/F10) at an ambient temperature of 25 degrees Celsius.



## OUR SPECIALISTS



— **TOM HAMELERS**  
Accountmanager  
E [t.hamelers@lightronics.nl](mailto:t.hamelers@lightronics.nl)  
M 06 53 20 16 76

📍 Noord-Holland, Flevoland, Utrecht, Gelderland  
(Postcode starting with 37 and 38)



— **MARINDA ROELOFS**  
Accountmanager  
E [m.roelofs@lightronics.nl](mailto:m.roelofs@lightronics.nl)  
M 06 11 64 97 09

📍 Limburg, Noord-Brabant, Gelderland  
(Postcode starting with 40, 41, 65 and 66)



— **PATRICK KLARENBEEK**  
Accountmanager  
E [p.klarenbeek@lightronics.nl](mailto:p.klarenbeek@lightronics.nl)  
M 06 25 10 77 28

📍 Friesland, Groningen, Drenthe, Overijssel, Gelderland  
(other postcodes)



— **MARC VAN ESCH**  
Accountmanager  
E [m.vanesch@lightronics.nl](mailto:m.vanesch@lightronics.nl)  
M 06 15 16 26 39

📍 Zeeland en Zuid-Holland