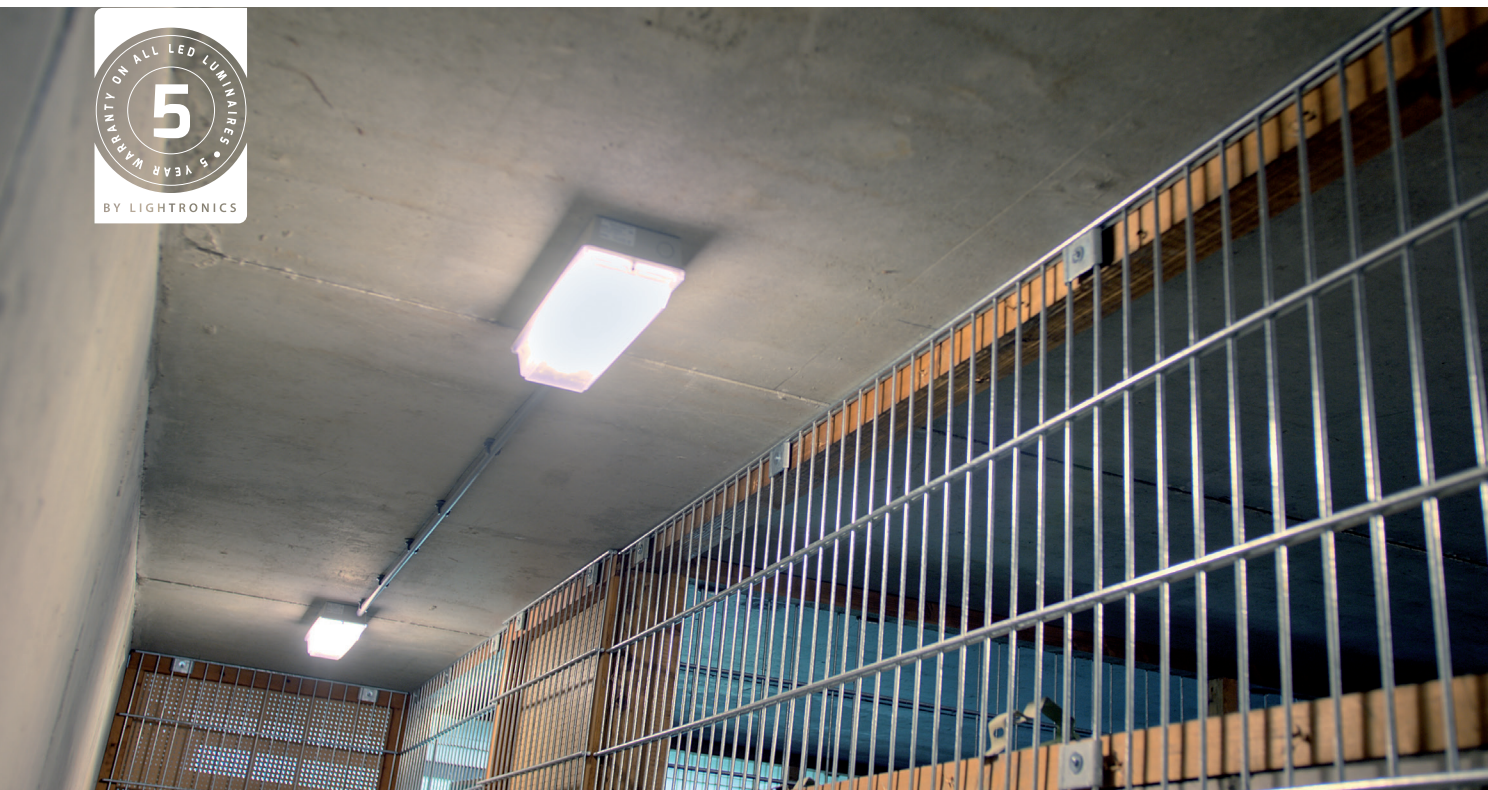


## WALL AND CEILING LIGHTING - IMPACTPROOF

## Robust surface-mounted luminaire



## PVR

## Application areas



Storages



Galleries



Technical rooms



Stair wells

Housing: impactproof, flame-retardant,  
UV-stabilised polycarbonate

Light source: LED, T5, TC-S

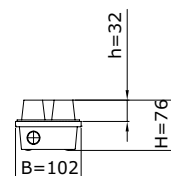
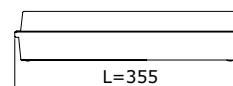
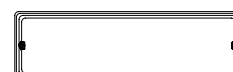
IP 65

≥4 x IK 10



\* Option

Dimensions in mm:



70000119N



70000115N



70000114N



70000114N

# Technical specifications



LIGHT SOURCE LED	LUMEN OUTPUT (LM)	EXPECTED LIFESPAN HR
LED	440	100.000
LED	560	100.000
LED	840	100.000

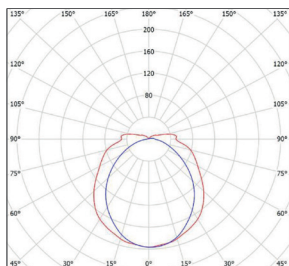
LIGHT SOURCE OTHER	POWER (W)
T5	1 x 8
TC-S	1 x 9
TC-S	1 x 11

OPTIONS	LED	OTHER
Seperate cover opal	✓	✓
Square mounting plate fot emergency exit-indication	✓	✓
Protective cap	✓	✓
Pictogram for emergency exit-indication	✓	✓
Emergency/continuous lighting, incl. ATF (1 hour)	✓	✓
24 Volt DC based on 1 LEDstrip	✓	
Colour temperature warm white (3000K)	✓	✓
Safety class II	✓	
Cable entry at side	✓	✓
Other RAL colour	✓	✓

## Product specifications

- light cover polycarbonate, clear prismatic or opal
- housing: batch-dyed grey (RAL7032)
- unit plate aluminium (LED), plastic (T5, TC-S)
- cable entry: at the back
- assembly-, installation- and maintenance-friendly
- voltage: 230/240 V, 50 Hz
- CRI: > 80
- colour temperature neutral white (4000K)
- lifespan LED (driver + LED) 100,000 Hrs at Tambient is 25°C (L70 / F10)

## PVR TC-S



Visit our website for the most up to date information

[www.lightronics.eu](http://www.lightronics.eu)

