



PRUNUS B

— DISTINCTIVE POST-TOP LUMINAIRE

The three different PRUNUS B models each have a different light cover and as such a unique shape. The PRUNUS B can be supplied with a LED ring in the top cover as an option, to create orientation points in public spaces. The LED ring is available in seven colours. With the modular PRUNUS family, you can assign the entire living environment its own identity, while styling it attractively.



Application areas



RESIDENTIAL
AREAS



SQUARES
AND PARKS



BUSINESS PARKS



CITY AND
VILLAGE CENTERS

Characteristics



IP 66

IK 10



OPTIONS



PRODUCTSPECIFICATIES

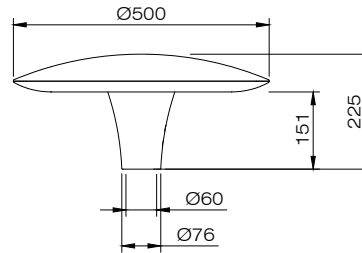
- Aluminium top cover coated
- Standard colour: RAL 7016
- Flat light cover (B1 / B2) polycarbonate, clear
- Lens-shaped light cover (B3): structured polycarbonate, clear
- Pole-mounted size: 60 mm
- Mass: ± 4 kg (depends on model)
- Wind surface: ± 0.05 m² (B1 / B2), 0.07 m² (B3)
- Safety class: I
- Assembly-, installation- and maintenance-friendly
- Voltage: 230/240 V, 50 Hz
- Standard Surge Protection (CM/DM): 8 kV/6 kV
- Standard cable type H05BQ-F (3x1.0 mm²)
- CRI: > 70
- Colour temperature neutral white (4000K) or warm white (3000K)
- Expected lifespan 100.000 hours at T environment = 25°C (L96/F10)
- Various light distributions

OPTIONS

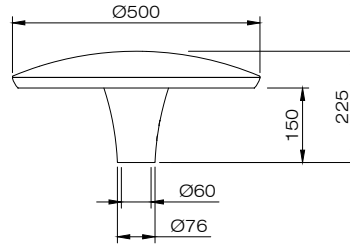
- Pole-mounted size 76 mm
- Other RAL colour
- Safety class II
- Several dimming options: Dali, Dynadimmer (integrated in driver), 1-10 V
- Constant Lumen Output (CLO)
- Other pre-fitted cable

DIMENSIONS PRUNUS B IN MM

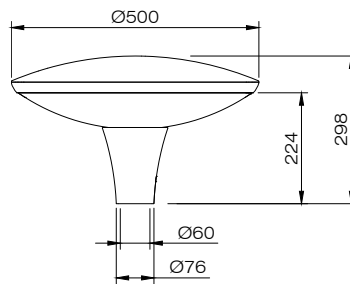
PRUNUS B1



PRUNUS B2



PRUNUS B3



Lightronics supplies its luminaires as standard as Easy Light, with five standard dimming schedules (1A, 2A, 3A, 4A or 5A) that can switch capacity and brightness based on pre-set times.



Lightronics offers full system integration with Controlled Solutions. This includes the use of communication modules from brands such as CityTouch, Luminext or TVilight.



As an option, this luminaire can be provided with a Zhaga book 18 connector and is Zhaga-D4i certified. This means that the luminaire can communicate with all sensors and nodes that also dispose of a Zhaga-D4i certificate and is as such suitable for the latest developments in the field of smart lighting and connectivity.



The smart lighting system SmartScan optimises the use of luminaires in your environment. Thanks to wireless communication, there is always sufficient light when required and energy is saved.

PRUNUS B1 | LED²WELL CORE OUR STANDARD LIGHTING SOLUTION

		3000K		4000K	
Number of LEDs	Lumen	LED-power (W)	System power (W)	LED-power (W)	System power (W)
24	1000	5,2	7,5	4,8	7,1
	1200	6,2	8,6	5,8	8,2
	1350	7,2	9,6	6,5	8,9
	1500	7,8	10,3	7,2	9,6
	1600	8,5	11,0	7,8	10,3
	1800	9,8	12,4	8,8	11,4
	2000	10,2	13,1	9,5	12,3
	2150	12,1	15,1	11,5	14,4
	2300	12,8	15,7	12,1	15,1
	2500	14,1	17,1	13,5	16,4
	2750	19,4	19,4	19,4	18,5

PRUNUS B2/B3 | LED²WELL CORE OUR STANDARD LIGHTING SOLUTION

		3000K		4000K	
Number of LEDs	Lumen	LED-power (W)	System power (W)	LED-power (W)	System power (W)
32	1500	7,7	10,8	7,3	10,4
	1800	9,6	12,7	8,7	12
	2000	10,4	13,6	9,6	13,1
	2500	13,5	16,7	12,1	15,2
	3000	16,1	19,7	14,8	18,1
	3500	19,4	23	18,2	21,6
	3780	21,3	24,6	19,4	23
	4000	22,6	26,1	21	24,2
	4320	24,8	28,3	22,6	26,1
	4860	28,0	31,6	25,7	29,1

RGB LED-RING (optional)

RGB LED ring top cover silicone (semi-transparent)

- Lavender White
- Eco Green
- Sun Yellow
- Ocean Blue
- Scarlet Red
- Evening Red
- Sky Blue
- Royal Orange

Colours may differ from brochure printed colours.

SMART CITY READY (optioneel)

Zhaga book 18 connector and screw cap (waterproof, IP66)

