

STREET AND SITE LIGHTING - OPTICA

Whimsical design, amazing technology

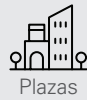


Unicliq LED unit

* Option

HOLBEIN

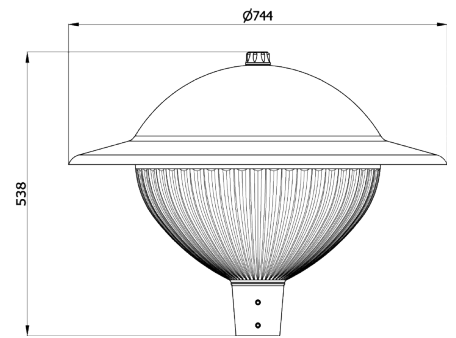
Application areas



Top cover: UV-stabilised polycarbonate, batch-dyed
 Light cover: UV-stabilised polycarbonate
 Optica shielding: clear structured polycarbonate
 Light source: LED, TC-L



Dimensions in mm:



Technical specifications



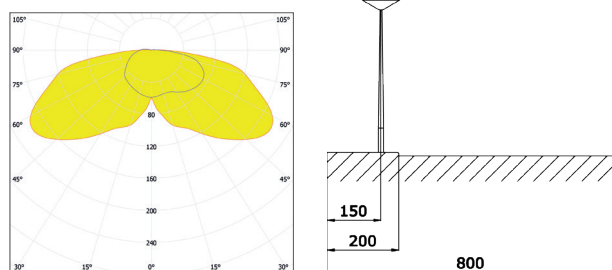
LED	LUMEN LED	LED (W)	SYSTEM (W)
16	800	5.8	8
16	1050	6.2	8.4
16	1200	6.9	9.1
16	1350	7.8	10
16	1500	8.8	11
16	1600	9.7	11.9
16	1800	11.1	13.2
16	2000	11.9	14
16	2150	12.8	14.9
16	2300	13.4	15.5
16	2500	14.8	16.9
16	2750	16.3	18.4
16	3000	17.9	20

LIGHT SOURCE OTHER	POWER (W)
TC-L	1 x 18
TC-L	1 x 24
TC-L	1 x 36

TC-L 36 W	
Eav / Uh	3 lux / 0.2 Uh
Profile width	6 meter + 2 meter sidewalk
Post height	4 meter
Post distance	28 meter

TC-L 36 W	
Eav / Uh	3 lux / 0.2 Uh
Profile width	10 meter + 2 meter sidewalk
Post height	4 meter
Post distance	26 meter

TC-L, 1 x 36 Watt



Product specifications

- light cover: polycarbonate lens, clear
- polycarbonate top cover, batch-dyed grey (RAL7038)
- UniCliq unit
- pole-mounted size: 60 mm
- mass: ± 8 kg (depends on model)
- wind surface: ± 0.15 m²
- safety class: I
- assembly-, installation- and maintenance-friendly
- voltage: 230/240V, 50Hz
- CRI: > 70
- colour temperature neutral white (4000K) or warm white (3000K)
- expected lifespan 100,000 Hrs (L80/F10)

Options

- fixture size 76 mm
- other RAL colour
- conical or tapered post, excl. junction box
- dimmable
- safety class: II
- various lens configurations (only for LED)

Visit our website for the most up to date information

www.lightronics.eu

