

STREET AND SITE LIGHTING

Impact-resistant and widely applicable

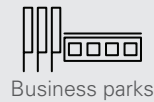


UniCliq LED unit

* Option

GBM

Application areas



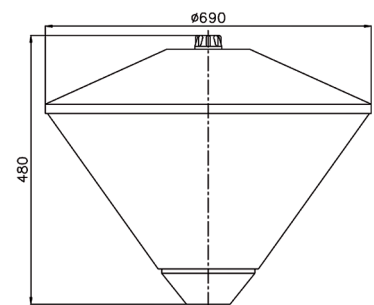
Top cover: UV-stabilised polycarbonate, batch-dyed

Light cover: UV-stabilised polycarbonate

Light source: LED, TC-L, HSE-I, HSE-E/HST



Dimensions in mm:



Technical specifications



LED	LUMEN LED	LED (W)	SYSTEM (W)
16	800	5.8	8
16	1050	6.2	8.4
16	1200	6.9	9.1
16	1350	7.8	10
16	1500	8.8	11
16	1600	9.7	11.9
16	1800	11.1	13.2
16	2000	11.9	14
16	2150	12.8	14.9
16	2300	13.4	15.5
16	2500	14.8	16.9
16	2750	16.3	18.4
16	3000	17.9	20

LIGHT SOURCE OTHER	POWER (W)
TC-L	1 or 2 x 18
TC-L	1 or 2 x 24
TC-L	1 or 2 x 36
HSE-I	1 x 50
HSE-I	1 x 70
HSE-E/HST	1 x 50
HSE-E/HST	1 x 70
Fitting	E27

LED 4000K 1600 LM	
Eav / Uh	3 lux / 0.25 Uh
Profile width	6 meter + 2 meter sidewalk
Post height	4 meter
Post distance	25 meter

TC-L 36 W	
Eav / Uh	3 lux / 0.2 Uh
Profile width	6 meter + 2 meter sidewalk
Post height	4 meter
Post distance	30 meter

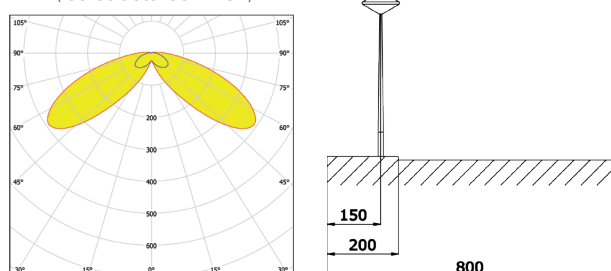
Product specifications

- light cover polycarbonate, ice-structured finish
- polycarbonate top cover, black (RAL9005) or grey RAL7032)
- pole-mounted size: 60 mm
- wind surface: $\pm 0.17\text{m}^2$
- mass: ± 10 kg (depends on model)
- safety class: I
- assembly-, installation- and maintenance-friendly
- voltage: 230 / 240 V, 50 Hz
- CRI: > 70
- colour temperature neutral white (4000K) or warm white (3000K)
- expected lifespan 100,000 Hrs (L80/F10)

Options

- opalen onderkap
- andere RAL-kleur
- conische of verjongde mast, excl. Faget-kast
- opzetmaat 76 mm
- dimbaar
- veiligheidsklasse II
- various lens configurations (only for LED)

LED (ice-structured finish)



Visit our website for the most up to date information

www.lightronics.eu

