

STREET AND OUTDOOR LIGHTING



One type of light distribution for bicycle paths and trails



Smart City Ready

* Option

BRISA EXL

Application areas



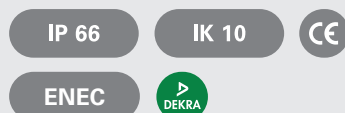
Bicycle paths



Trails

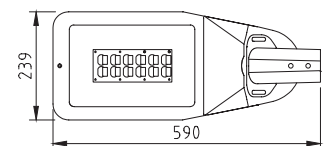
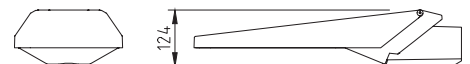
Housing: aluminium double coated (RAL 9007, 9005 or 7016)

Light source: LED

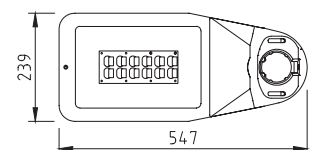
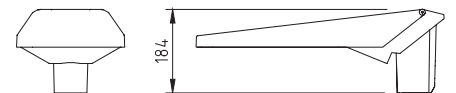


Dimensions in mm:

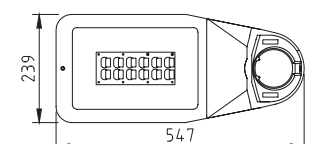
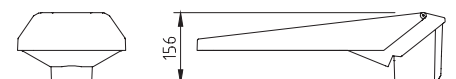
Pole size 48/60 (bracket mounted)



Pole size 48/60 (pole-mounted)



Pole size 76 (pole-mounted)



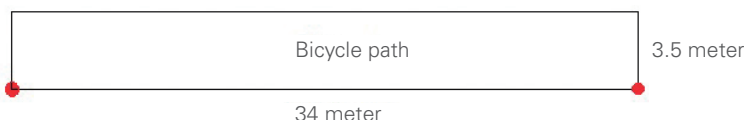
Technical specifications



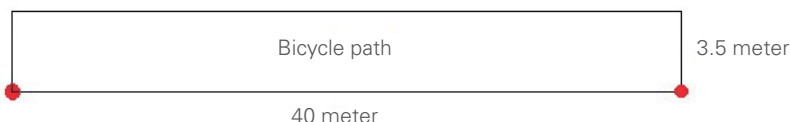
LED	Lumen LED	LED power (W)	System power (W)
12	800	4.3	6.4
12	1050	5.8	8.1
12	1200	6.7	8.9
12	1350	7.5	9.8
12	1500	8.4	10.8
12	1600	9.1	11.5
12	1800	10.5	13
12	2000	12	14.6

	BRISA-EXL1-800 LM	BRISA-EXL-1-1200 LM
Egem / Uh	3.0 lux / 0.20	3.0 lux / 0.20
Pole height	4 m	5 m
Pole distance	34 m	40 m

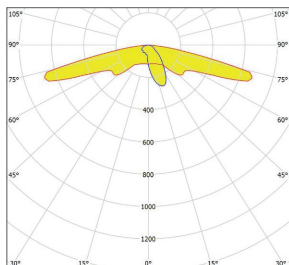
BRISA-EXL-1-12 LED-4000K-800 LM- 7.8 W



BRISA-EXL-1-12 LED-4000K-1200 LM- 9,1 W



Bicycle paths and hiking trails



Product specifications

- standard in 12 LEDs
- colour temperature standard neutral white (4000K) or 3000K (warm white)
- external lenses sealed with rubber
- LEDs with one type of light distribution
- CRI: > 70
- pole fixing (separate pieces):
 - for pole size 60/48 mm (pole- and bracket mounted)
 - for pole size 76 mm (pole-mounted only)
- tilt angle adjustable from 0 to 15° (pole mounting 60 mm), -15 to 0° (bracket mounting 48/60 mm), 0 to 10° (pole mounting 76 mm)
- safety class: I
- voltage: 230/240 V, 50 Hz
- aluminium insert instead of safety glass for a higher return
- mass: ± 6 kg (depends on model)
- wind surface: ± 0.01 m² (front), ± 0.03 m² (side)
- assembly-, installation- and maintenance-friendly
- expected lifespan Hrs: 100,000 (L80 / F10)

Options

- several dimmable options available: Dali, Dynadimmer (integrated in driver), 1-10 V
- safety class: II
- Outdoor Luminaire Controller

Visit our website for the most up to date information

www.lightronics.eu

